

Orthorobot Medical Technology

The specialized laboratory for indirect bracket positioning with robot technology
Lingual and labial technique

Bonding Instructions

1

Preparation:
Sondhi Rapid-Set
Orthorobot
transfertray



[1]: Sondhi Rapid-Set

2

Prophy surfaces of
teeth thoroughly.
Recommendation:
Send patient to a den-
tal hygienist 3-4 days
before bonding.



[2]: Proxylt Polish blue

3

Verify that tray fits
correctly intraoral.
Check form-fitting
with the mirror.



4

Cleanse the individu-
al bracket base with
FOKALDRY. Air dry
thoroughly.

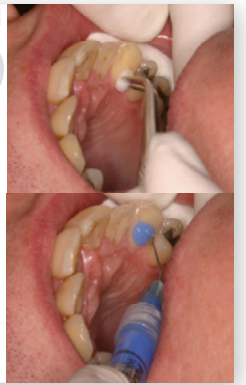


[3]: FOKALDRY

5

Condition enamel
surface with etching
gel (38 % phosphoric
acid).

[4]: Etch Rite Gel 38%



6

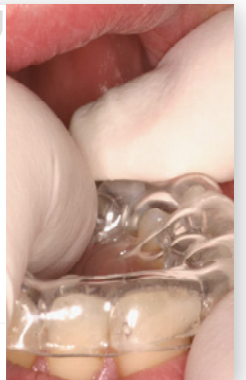
Bonding with the
Sondhi-Set.
Resin A (white) -> tooth,
Resin B (orange) ->
bracket base.

[1]: Sondhi Rapid-Set



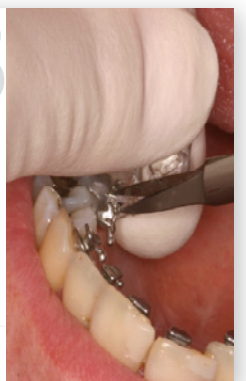
7

Seat tray and hold for
30 seconds using light
force. Don't move the
tray.



8

Remove tray af-
ter 2 minutes.



9

Self-ligating: Rinse
blocking material tho-
roughly.
Remove excess resin
with Scaler and floss.



Orthorobot Medical Technology

The specialized laboratory for indirect
bracket positioning with robot technology
Lingual and labial technique

Material recommendations

[1]:

Sondhi Rapid-Set Indirect Bonding Adhesive

Order No.: REF 712 070 (without video)

REF 712 071 (with free video)

Quantity: 1 Pack

Supplier: 3M Unitek

www.3m.com



[2]:

Proxyt Prophy Paste RDA 83 coarse

Quantity: 55 ml

Supplier: Ivoclar Vivadent AG

www.ivoclarvivadent.com



[3]:

FOKALDRY Cleaning Solution

Order No.: 032305

Quantity: 80 ml

Supplier: lege artis Pharma GmbH + Co KG

www.legeartis.de



[4]:

Etch-Rite Etching Gel 38% Phosphoric Acid Etching Gel

Order No.: 6006/K4

Quantity: 24 x 1.2 ml syringes

Supplier: Pulpdent Corporation

www.pulpdent.com



All products can be obtained from Orthorobot. Please order with the Orthorobot Lab Order Form!